

## Installation instructions for Carplay interface Porsche



### Porsche PCM 3.1 Cayenne

The interface is connected via a connection cable with socket block. It is estimated that it takes about 60 minutes of work to connect the interface.

#### **Step 1, Remove the air vents (unclipping)**

The air vents are clipped into place at 4 points each.



Using a flathead screwdriver, pull the 4 clips inwards and then remove the air vent. Repeat for the other air vent.



**Step 2. Remove radio (unscrew)**

Unscrew the radio (4x torx), pull it forward and place it on a protective cloth on the center console.



**Step 3. Disconnect the plugs**

Turn off the ignition. Disconnect the square black power strip from the radio. To do this, press the lever at the bottom and in the middle and pull it up (the

black connector of the interface has the same construction as an example). Also disconnect the other connectors (press and pull tab).

**Step 4. Remove the display from the radio (screws)**

Remove the display by unscrewing the four screws at the top and bottom. Press the clips on the side of the screen and gently pull the screen off.



Disconnect the connection strips by pulling the strip holders slightly forward with your nails. Be careful not to break off a lug from the clip. The display is now detached from the radio unit.



**Step 5. Open up the radio (screws)**

Remove the three screws on the back of the radio and slide the lower part back until it comes off .



Disconnect the connecting strip.



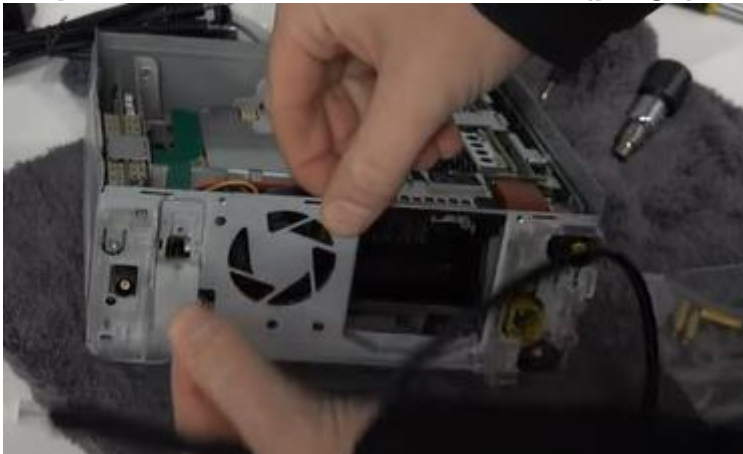
**Step 6. Assemble the PCB (Screws)**

Mount the existing strips and the two antennas on the new circuit board. This can only be done in 1 way. Slide the new strips through the slot where the original strips were.



Screw on the new (additional) circuit board.

**Step 7. Disconnect the video cable (plugs)**



Remove the bracket next to the vent to make room for the passage of the two cables that are clicked onto the circuit board. Position the two antennas as well.



**Step 7. Reassemble the radio (screws)**

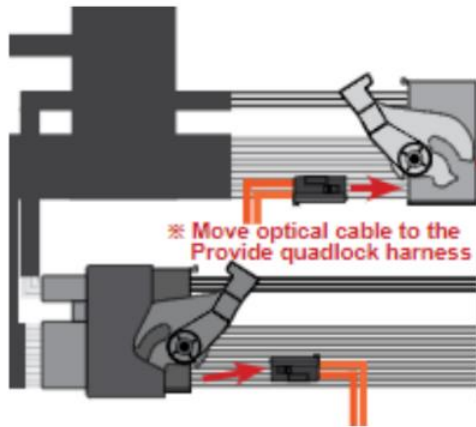
Reassemble the radio in reverse order and reposition it near the radio opening.



**Step 8. Connect the interface cable to the radio (plugs)**

Remove the integrated plug with the two optical cables (usually green or orange). To do this, pull out the latch with a pointed object so that the plug can be pulled out. Transfer this plug to the interface power strip (press in), then plug this power strip into the radio. Then connect the other power strip to the socket.





**Step 9. Connect the remaining cables to the radio (plugs)**

Plug the original cables back into the radio.

**Step 10. Position the USB cable (conduct)**

Determine the most desired position of the USB plug. Route the USB cable to that position. If necessary, use a USB extension cable.

**Step 11. Test the system (operate)**

Connect the interface and test the system for graphics, sound, radio and interface switching, and reverse shifting. **The sound goes through AUX.** Switch between the original system and the Carplay system via the **INFO button**.

**Step 12. Position the antennas (slice)**

Route the antennas to one of the vents. Tape the antennas somewhere near the air vents. In that case, the system has the best connection.

**Step 13. Enjoy!**



### ***Carplay/Android Auto***

For wireless CarPlay, turn off the Bluetooth with the Porsche and make a Bluetooth connection to the Carplay interface (code 0000). Turn on Wi-Fi.

### ***Mirroring***

Follow the on-screen instructions. In the case of a wired connection, you may need to disconnect and connect the plug.